

Cover

SSP logo

Safer Stockton Partnership
Crime and Disorder Audit
August 2013

HEADLINES

Since 2009/10, crime has reduced by 5.64%

Since 2009/10, Criminal Damage has reduced by 21.3%,

Since 2009/10, public reported violence has reduced by 8.37%, – this is based on violence with and violence without injury.

Prize draw

Any ideas for front cover PICTURE???

Visit our website www.saferstockton.com

Did you know? The Safer Stockton Partnership is the 'Crime' arm of the Local Strategic Partnership Stockton Renaissance?

How to contact us:

CST

communitysafety@stockton.gov.uk

ASB HOTLINE

asb@stockton.gov.uk

CONTENTS:

	Pages
- Introduction	3 -4
- Summary of partnership performance	5 - 7

COMPLETE OUR SURVEY – WIN A PRIZE!

Prize sponsored by ??

You can also complete our survey on line at

www.saferstockton.com and www.Stockton.gov.uk

Fact: Page 3 facts

OPTIONS FOR FACT HEADLINE

Over the past 3 years, total crime in the Borough has reduced by 5.6%, that's 671 fewer victims of crime.

Over the past 5 years, total crime in the Borough has reduced by 36.5%, that's 5985 fewer victims of crime.

Over the past 10 years, total crime in the Borough has reduced by 42%, that's 8105 fewer victims of crime.

This is the sixth Crime and Disorder magazine produced by the Safer Stockton Partnership (SSP). It is our main consultation that we carry out every three years to identify the key concerns of residents. Funding for the production and the delivery of the magazine comes from the partners on SSP and it's delivered to every door in the Borough. We do small scale consultations throughout the three year period and the information that we gather helps us to direct our resources to where they are most needed.

During August to October we will carry out extensive consultation with residents so look out for us and as well as having your chance to tell us what is most important you could also win a prize.

The aim of this magazine is to inform residents of how we have performed over the last three years. We have included a summary this time round which can be seen on [pages 5 – 7](#) with more detail on each category later in the magazine. We hope that after you have read this magazine you will have a better understanding of the work of the Safer Stockton Partnership and what we do on your behalf to make Stockton the safest place in the Tees Valley.

Did you know? Over the past 10 years, house burglary has reduced by 77%, that's 1773 fewer households targeted.

Pic 1 ?

INTRODUCTION

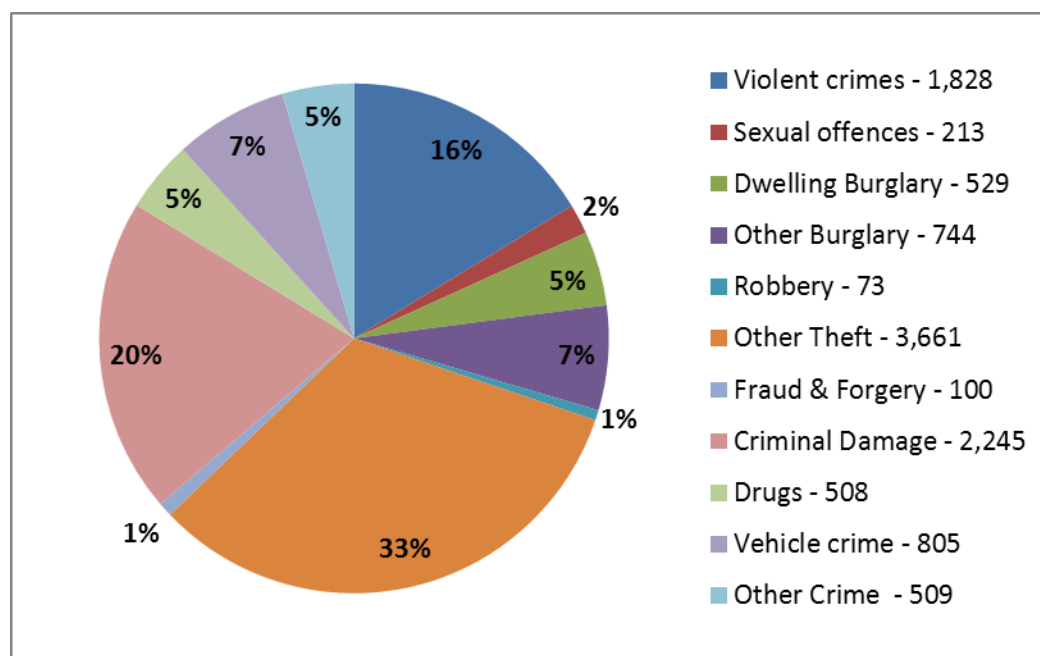
FACT: The population of Stockton Borough has increased by 4% over the past 10 years, however during this time, crime in Stockton has reduced by 42%??

Pic 2 ?

Stockton continues to be the safest place to live in the Tees Valley area!

There were 11215 crimes recorded in 2012/13, a reduction of 5.6% over the last three years. That's 671 fewer victims of crime.

The pie chart shows that the majority of crime is made up of Other Theft offences, which also includes shoplifting and metal thefts, followed by Criminal Damage and violence. This is a similar picture to the past three years, but there are still challenges ahead with Other Theft offences having increased in the 12 months, in particular shoplifting.



FACT : Any landlord can join the Landlord Liaison Scheme for free even if you have one property or a hundred and one!

YOU SAID – WE LISTENED – WE DID!

In the summer of 2010 we carried out the same consultation exercise as this one and more than 5,000 respondents told us what really mattered to them and what SSP should prioritise to make our borough an even safer place.

- Anti-Social Behaviour
- Alcohol related crime/ anti-social behaviour

Last saved CS

- Violent crime
- Drug related offending
- Criminal Damage
- Emerging Issues

SSP also chose Emerging Issues as a theme and we have used monthly Tasking and Coordinating meetings and the Partnership Strategic Assessment to identify which crime type we need to focus on, based on intelligence and reported crime and anti social behaviour. Other Theft has remained the key priority within this category but the specific types of crime within that category have changed between theft of metals and Shoplifting. We have also focussed on providing reassurance and in line with national policy Preventing Violent Extremism. We set targets for each priority which are monitored by SSP, every quarter. Performance monitoring papers can be viewed on www.saferstockton.com.

Did you know? Detection rates have increased from ?% to over ?% in the last three years.

Reduce Anti Social Behaviour

We maintained our approach of using prevention, support and enforcement to tackle this issue.

Over the last three years we have been contacted for help over ?? times, have issued almost ?? warning letters, ?? ABCs and obtained ?? ASBOs / CRASBOs.

We work in schools to educate young people on the consequences of anti-social behaviour. We carry out a range of initiatives in schools such as our successful 'Roach' campaign which highlights the key issues of ASB in a creative and interactive way. We also deliver lesson's aimed at addressing risk taking behaviour, alcohol awareness as well as exploring the various elements of Hate Crime. For more information contact Claire Sills (01642) 527616 communitysafety@stockton.gov.uk

Residents were asked through Focus Groups how satisfied they were with how the Council and Police deal with anti social behaviour. We are pleased that Stockton respondents showed an improved satisfaction level from a similar survey in 2010?

SUMMARY OF PARTNERSHIP PERFORMANCE

FACT :

Reduce Alcohol related Anti-Social Behaviour

Did you know?

Reducing Violent Crime

Did you know?

Pic 12

SUMMARY OF PARTNERSHIP PERFORMANCE

FACT:

Reduce Criminal Damage

Did you know?

Emerging Issues

Pic 3 ?

SUMMARY OF PARTNERSHIP PERFORMANCE

Page 8

Waiting for national crime rate and then populate a graph

WHAT THE DATA TELLS US

Page 9 –

Five year option to be used

Crime comparison over the last five years							
Recorded Crime	2008/09	2000/10	2010/11	2011/12	2012/13	change	%change
Violence	2738	2324	2058	2076	2139	-599	-22
Robbery	107	53	73	71	73	-34	-32
Sexual Offences	178	169	156	214	214	36	20
Dwelling burglary	752	597	497	584	529	-223	-30
Other burglary	915	727	683	791	744	-171	-19
Theft of a motor vehicle	418	328	217	264	202	-216	-52
Theft from a motor vehicle	660	521	445	601	544	-116	-18
Vehicle interference	91	90	107	69	59	-32	-35
Other Theft	3773	2995	3348	3568	3550	-223	-6
Criminal Damage	3622	2855	2323	2472	2257	-1365	-38
Forgery&Fraud	301	247	200	278	243	-58	-19
Drugs	712	754	547	553	508	-204	-29
Other Crime	203	226	178	127	153	-50	-25
TOTAL CRIME	14470	11886	10832	11668	11215	-3255	-22

Over this time the number of sexual offences has increased. This is largely due to an increase in reporting of historical offences due to victims being more prepared to come forward to report incidents.

WHAT THE DATA TELLS US

Page 10

FACT : There are four Local Area Partnership Boards in Stockton and a representative from each sits on the Safer Stockton Partnership.

Community Partnerships and Residents' Associations feed into the Boards, who underpin the Stockton Renaissance process.

The Area Partnership Boards bring together representatives from the voluntary and community sector, local business, local agencies and resident's associations to give local people a chance to influence services provided within their area.

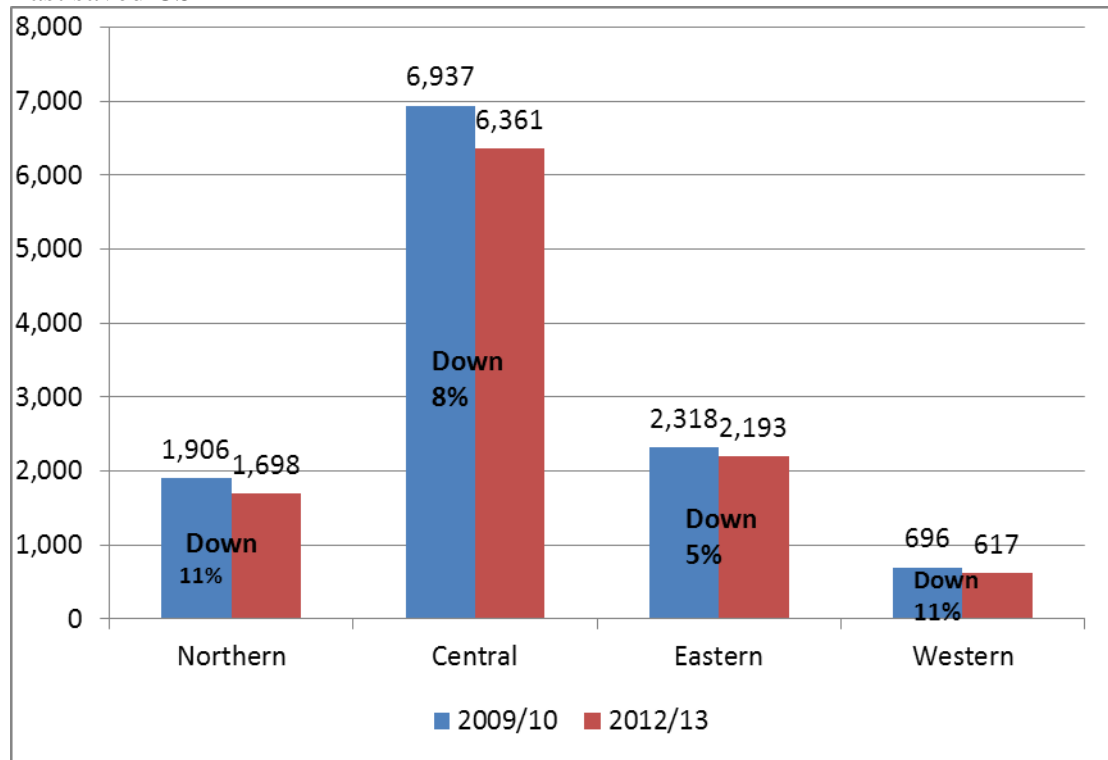
There are four Area Partnership Boards in Stockton Renaissance:

- Central Area Partnership Board covering the areas of Hardwick, Bishopsgarth and Elm Tree, Fairfield, Hartburn, Grangefield, Parkfield and Oxbridge, Stockton Town Centre, Norton and surrounding villages.
- Eastern Area Partnership Board covering the areas of Thornaby, Ingleby Barwick, Hilton, Maltby and surrounding villages.
- Northern Area Partnership Board covering the areas of Billingham, Wynyard, Wolviston and outlying areas.
- Western Area Partnership Board covering the areas of Yarm, Eaglescliffe, Kirklevington, Long Newtown, Elton and surrounding villages.

Area Partnerships Boards

Area Partnership Boards have an important role to play within the Stockton Renaissance process.





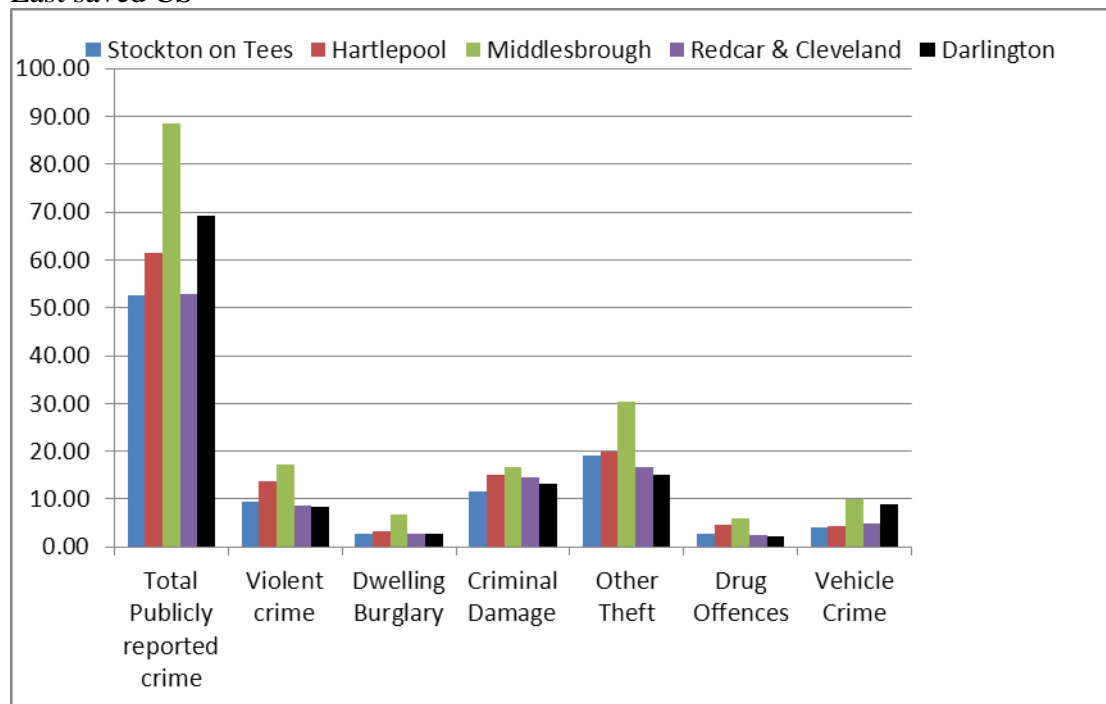
Page 11

Did you know ? FACT

Stockton has the largest population in the Tees Valley. Of the 663,000 residents, nearly 30% (191,800) live in the Stockton-on-Tees Borough, yet Stockton continues to be the safest place to live for public reported crime.

FACT

We have the lowest rate in the Tees Valley area for total public reported crime, dwelling burglary, criminal damage and vehicle crime.



Page 12
Awaiting total crime for UK

THE TOWN CENTRE EFFECT

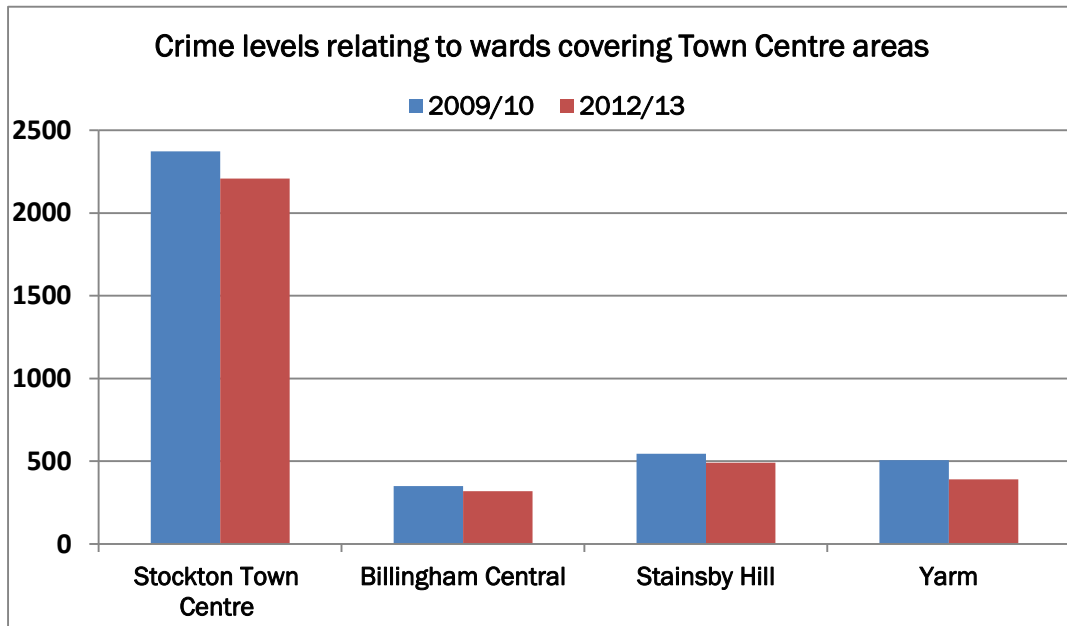
We know that some town centres have higher levels of certain types of crime and anti social behaviour because they attract more people due to the concentration of shops and leisure facilities within them. We can see this particularly in Stockton Town Centre ward which is the biggest of our town centres.

Did you know? To identify which ward you live in you can visit [Crime in Your Area on www.saferstockton.com](http://www.saferstockton.com) or phone 01642 527616.

Page 13/14

Pages relate to town centre areas.
 Options of using the below information.
 This shows that crime has reduced in all of the four town centre ward areas.

Wards covering Town Centre areas	3 year change
Stockton Town Centre	-7.0
Billingham Central	-8.9
Stainsby Hill	-10.1
Yarm	-22.7

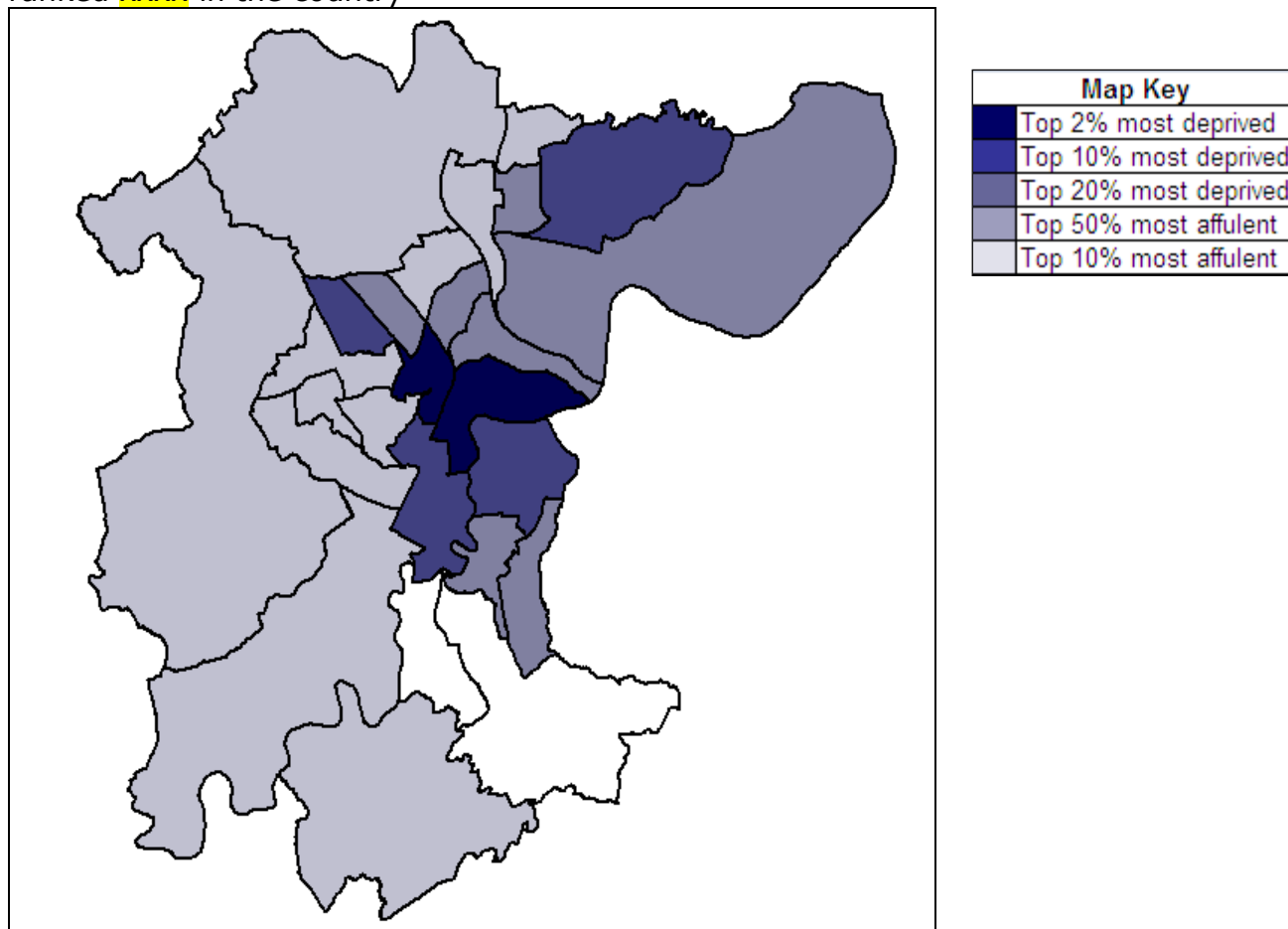


FACT: We have two wards in the top 2% most deprived wards nationally, a further four wards in the top 10% most deprived wards, and another eight wards in the top 20% most deprived wards. There are also two wards in the top 10% most affluent wards nationally.

Last saved CS

HOW DOES CRIME RELATE TO OTHER PROBLEMS

It is important to understand the correlation between crime, ASB and deprivation. Each ward in England and Wales is ranked out of 7,900, with one being the most deprived. The rankings are also published by Local Authority area and Stockton is ranked **xxxx** in the country



Our borough has an unusual mix of social and economic factors, with areas of disadvantage sitting alongside areas of affluence. The map alongside shows the distribution of deprivation across Stockton.

Five of our wards contain areas that have the highest levels of crime in them and also feature as being within the top 10% most deprived nationally. Two host town centre shopping and/or leisure facilities and we know that crime is likely to be higher where people gather to shop or for entertainment. Yarm is an exception, it has a busy shopping and entertainment hub but only accounts for 3% of the Borough's crime.

Page 15

Deprivation rank table the chart on the next page can be used to see if your ward has more or less crime compared to its national level of deprivation. We have listed

Crime and Disorder Audit 2013 Draft 3: 25th April 2013

Last saved CS

all wards showing the ranking for deprivation on the left (with their national ranking figure alongside) and the total crime per 1,000 population on the right. We would expect those wards high in deprivation to also be high in crime. The 'smiley face' shows whether crime is higher, lower or about what you would expect given the levels of deprivation.

Deprivation Rank			Crime Rank (per 1000 population)		
1	Stockton Town Centre	17	1	Stockton Town Centre	☹
2	Newtown	189	2	Parkfield&Oxbridge	☹
3	Hardwick	352	3	Mandale&Victoria	☹
4	Mandale and Victoria	563	4	Newtown	☹
5	Parkfield and Oxbridge	589	5	Norton North	☹
6	Billingham East	719	6	Hardwick	☹
7	Roseworth	840	7	Stainsby Hill	☹
8	Stainsby Hill	845	8	Billingham East	☹
9	Norton North	919	9	Norton South	☹
10	Norton South	1068	10	Billingham South	☹
11	Billingham South	1276	11	Roseworth	☺
12	Billingham Central	1336	12	Billingham Central	☹
13	Village	1507	13	Bishopsgarth&Elmtree	☹
14	Bishopsgarth and Elm Tree	3485	14	Village	☹
15	Western Parishes	4188	15	Norton West	☹
16	Grangefield	5002	16	Yarm	☹
17	Fairfield	5258	17	Northern Parishes	☹
18	Billingham North	5704	18	Grangefield	☹
19	Norton West	6228	19	Western Parishes	☺
20	Billingham West	6298	20	Fairfield	☹
21	Northern Parishes	6332	21	Billingham West	☹
22	Yarm	6672	22	Eaglescliffe	☹
23	Eaglescliffe	6829	23	Ingleby Barwick East	☹
24	Hartburn	7008	24	Hartburn	☹
25	Ingleby Barwick West	7428	25	Billingham North	☺
26	Ingleby Barwick East	7567	26	Ingleby Barwick West	☹

Last saved CS

Crime rates are lower than would expected from the deprivation ranking

Crime rates are about the same as would expected from the deprivation ranking

Crime rates are higher than would expected from the deprivation ranking

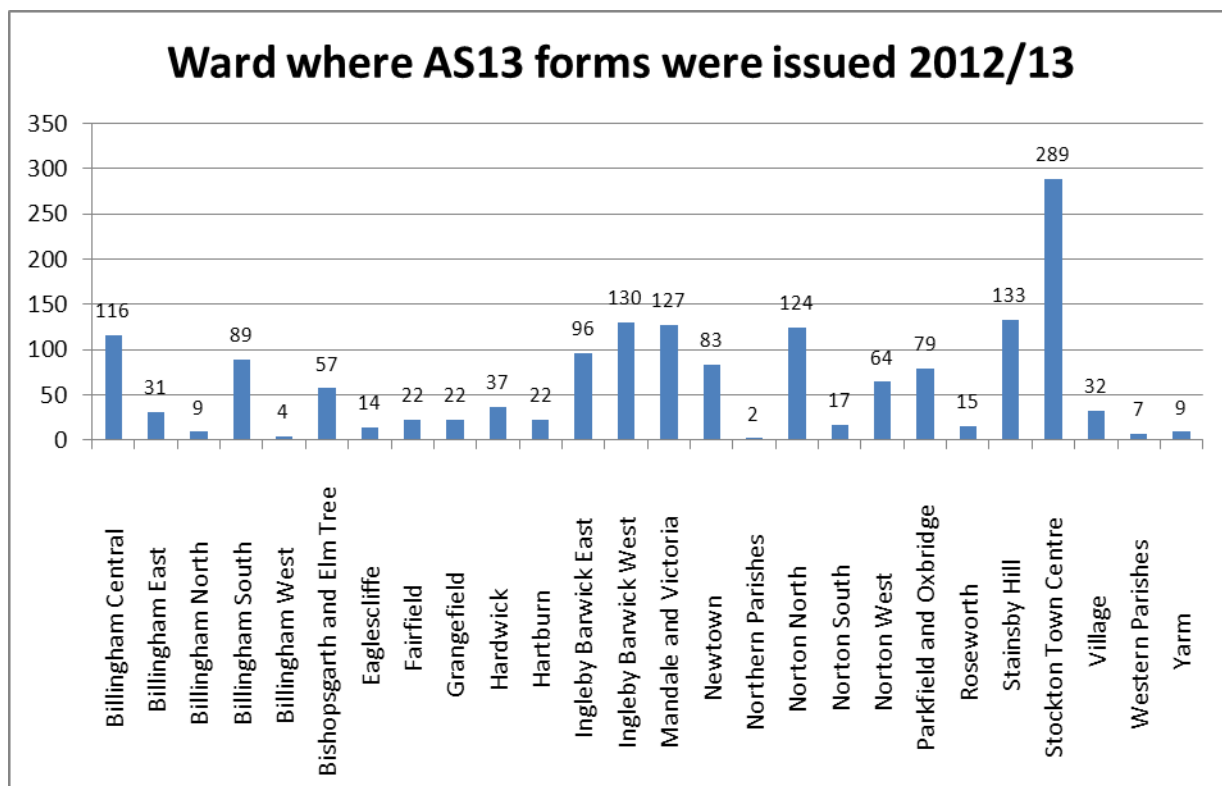
Page 17

Page 18 -Bar chart relating to ASB data

We first started using AS13s in 2006 and since then 11,358 have been issued.

- If you use an illegal waste carrier to get rid of household waste and its then fly tipped – then you are liable for prosecution and a fine of up to £5,000. Always check a waste carrier’s licence and ask for a waste transfer note.
- Since the beginning of the Neighbourhood Enforcement Service in 2006 over 2000 fines have been issued for various criminal offences against communities (2064) such as littering, dog fouling and dumping waste amongst others.

Page 19



Billingham Town Council and Ingleby Barwick Town Council both fund additional Neighbourhood Enforcement Services within their respective areas, which has a bearing on the figures shown above.

Last saved CS

Enforcement has provided info for ASB Hotline, but only for 2012/13, so have asked for previous 2 years so we can do a comparison.

The data below is taken from the financial year 1st April 2012 to 31st March 2013;

Nuisance Vehicles:

Untaxed Vehicle – 448

Dangerous and Obstructing – 1714

Abandoned Vehicles – 127

Total – 2,289

Fixed Penalty Notices:

2012 to 2013 – 363

Pge 21 – 25

Client ex PPO age 33

“From the age of 13 I started using Heroin which led to me committing crime. It escalated quite quickly from shoplifting to thefts, house burglaries, shop burglaries and scrap metal thefts. I ended up being in and out of prison from the age of 15 right through till I was 30. Towards the end of my last sentence just over 2 years ago I was inspired by a guest speaker who the prison got in who himself was an ex offender and ex drug user. On release I engaged with services around Stockton, including Probation, CRI and the Birchtree practice. These helped me to organise my life in stages, breaking it down in to little goals, achieving little goals to get to the big goal really helped me see the progress. One of the goals I achieved was gaining employment this helped me to rebuild my life.

About a year ago after reducing, I came off all prescribed medication. I am now a happy family man.

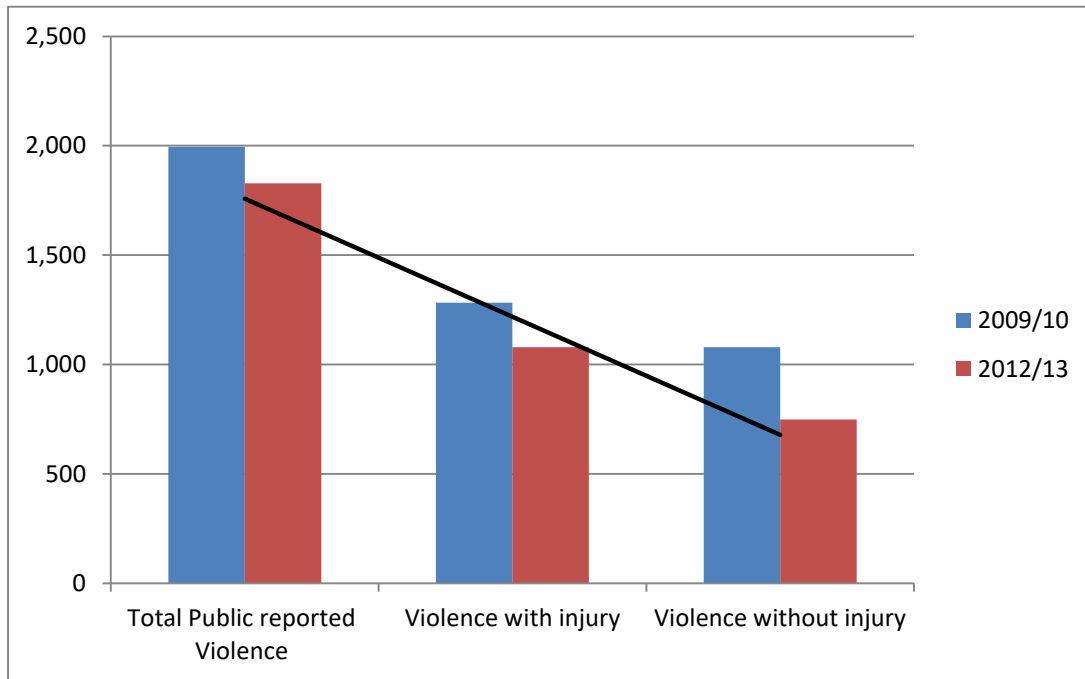
“I still receive support from Stockton Recovery Service and feel without the help I received from all the Stockton services I would not have got through this.”

Page 23

11.04.13 - Emailed Keith Daley regarding Drugs dog

Page 26

Levels of violence over 3 year period.



Page 27

11.04.13 - Emailed Keith Daley regarding good news stories relating to use of A&E data and licensing revocations.

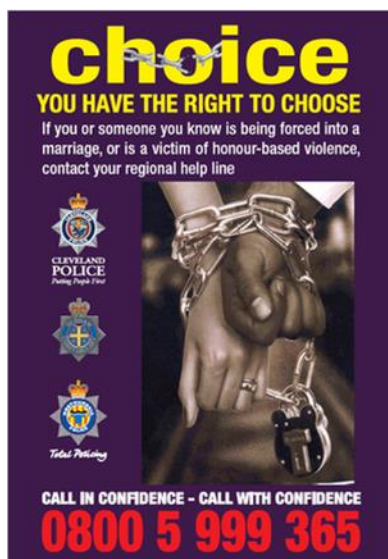
Info on Pubwatch to be included – Claire Sills

Pic 9 street pastors?

Page 28/29

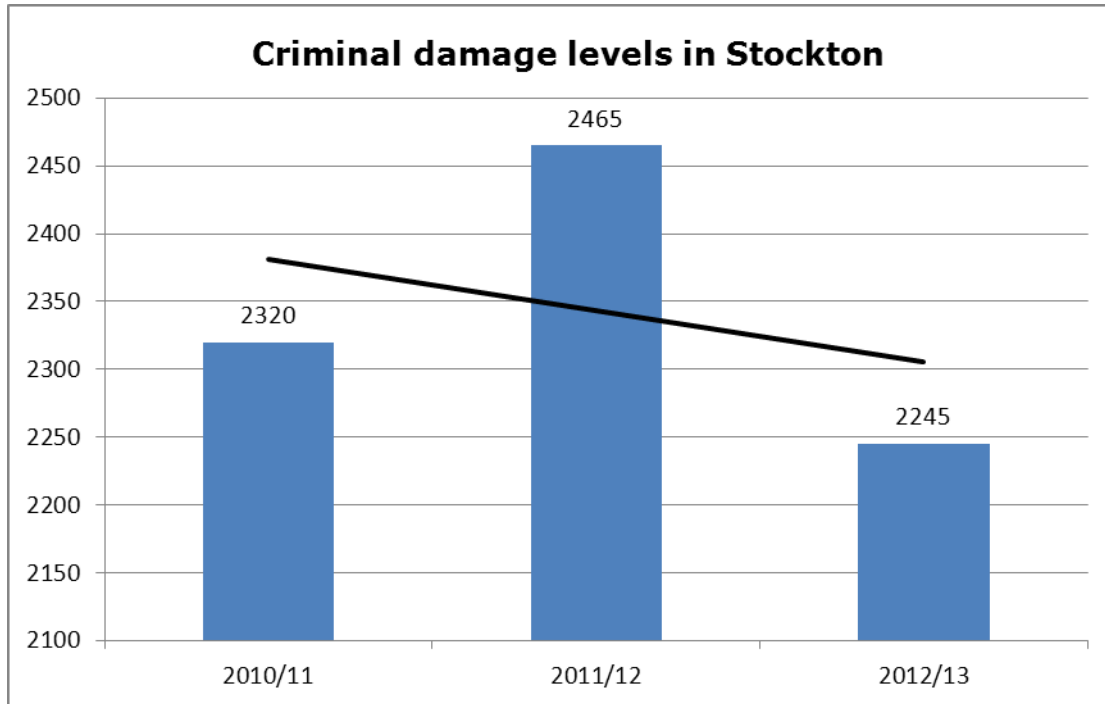
Referral data to be added in – Steve Hume

Harbour data graph to include police incidents/crimes if suitable – L Lyons



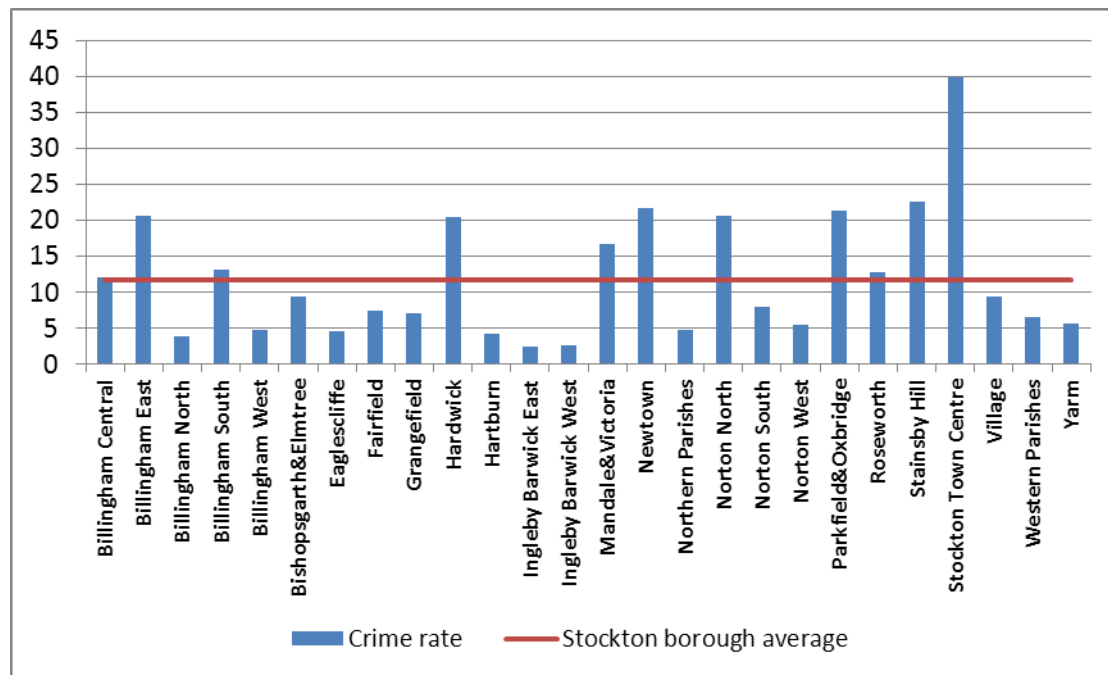
Page 30 possible to merge with 29.

Page 31



% of damage to total crime over last three years hasn't changed significantly therefore there are still some challenges ahead for the Borough.

Year	% Total crime
2010/11	21
2011/12	21
2012/13	20



The crime rate in the above chart is based on the number of crimes per 1,000 population

To add in national average once we get the rates.

Page 33

Young Victims of Crime Lesson

The Young Victims of Crime Lesson is a free one hour lesson offered to all schools across the Stockton borough to pupils in years 6, 7 & 8 (ages 11, 12 and 13). It is delivered as part of their Personal, Social and Health Education programme and aims to raise awareness amongst pupils about becoming a victim or witness of crime and anti-social behaviour.

The lesson explores what it feels like to become a victim, giving advice about who is out there to help and how to get in touch. The lesson also looks at when young people gather they can intimidate and make people feel like victims- even in their own homes!

Alcohol and Anti-Social Behaviour

The Alcohol and Anti-Social Behaviour Lesson is delivered within the latter years of secondary school. It looks at the potential risks involved when drinking alcohol and how drinking alcohol can influence young people to commit ASB. It is an interactive lesson covering the impact alcohol has upon society, crime, anti-social behaviour, health and other forms of risk taking behaviour. The free one hour lesson is usually

delivered in Personal, Social and Health Education time, Health days or to pupils on special measures.

Junior Neighbourhood Watch

Junior Neighbourhood Watch is a fun and informative after school club. The scheme is designed to teach the children important safety advice which they can pass on to their families and friends. These lessons are delivered by our emergency services who visit the children on a regular basis. The children also go out to visit the emergency services at their place of work. This helps them to understand the problems and dangers our teams face while out on duty. Hopefully by introducing these "positive role models" to the children, they will feel happy to approach them for help or advice.

Our focus is to bring back good old community spirit. Children can help make their communities safer and take pride in helping others. Overall we encourage them to be kind and considerate citizens and show them that they can solve problems in their area by working together.

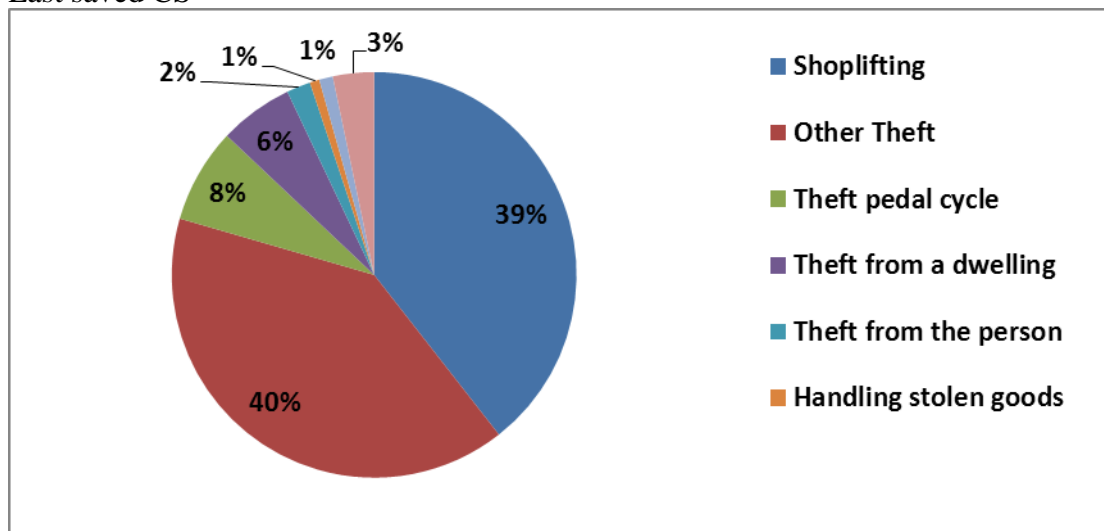
Stay Safe Event

The Stay Safe Event was held during March 2013, at Hardwick Community Centre. Representatives from various organisations of the Safer Stockton Partnership attended, including Cleveland Police, Cleveland Fire Service, the ASB Team, TRISTAR Homes Ltd, Enforcement, STASH and the Integrated Youth Support Service.

For the full day children from various local Primary Schools visited the community centre and participated in various interactive activities provided by each service, to learn about community safety issues. For example, the ASB team demonstrated the risks involved with drink driving. The children were able to try on the beer goggles and have a go at the drink driving game which brings home the risks of drink driving!

Page 35-37

Page 36



Metal offences

Accounted for 7% of public reported crime. This includes all offence types where metal taken including burglary, vehicle crime, and thefts. This is a significant reduction compared to previous years.

Shoplifting

Continues to fluctuate over the last three years and accounts for 14% of public reported crime

with 40% of all shoplifting occurring within Stockton town centre. There are challenges still ahead

with this type of crime and the Safer Stockton Partnership will continue its efforts to reduce levels over the forthcoming period.

However 75% of all offences are detected for this crime type.

Scrap Metal Dealers Act

The Scrap Metal Dealers Act 1964 regulates the scrap metal industry and is managed by local authorities. The Act has recently been changed aiming to reduce the number of metal theft offences occurring within the UK. The Home Office stated that approximately 1,000 metal thefts occur each week, costing the country at least £220 million each year. The Bill has created a number of changes to ensure that it reflects the twenty-first century scrap metal industry. The changes give local authorities power to refuse to grant or to revoke the licence of 'unsuitable' dealers. Police will now have powers of entry and inspection to tackle illegal trading in metal yards. It bans all scrap metal dealers from trading in cash, removing the 'no questions asked' cash payments which encourage metal thieves and rogue dealers. Scrap metal dealers must now keep more detailed and accurate records of transactions they make, and must verify the identity of those selling metal to them. The Bill changes guidelines for the vehicle salvage and scrap metal industries creating a single set of guidelines. The changes require people making an application

Last saved CS

for a licence, to pay a fee set by their local authority. This will provide local authorities with the funding they need to administer and enforce the regime.

→ DI Anne-Marie Salwey to update on specific operation.